

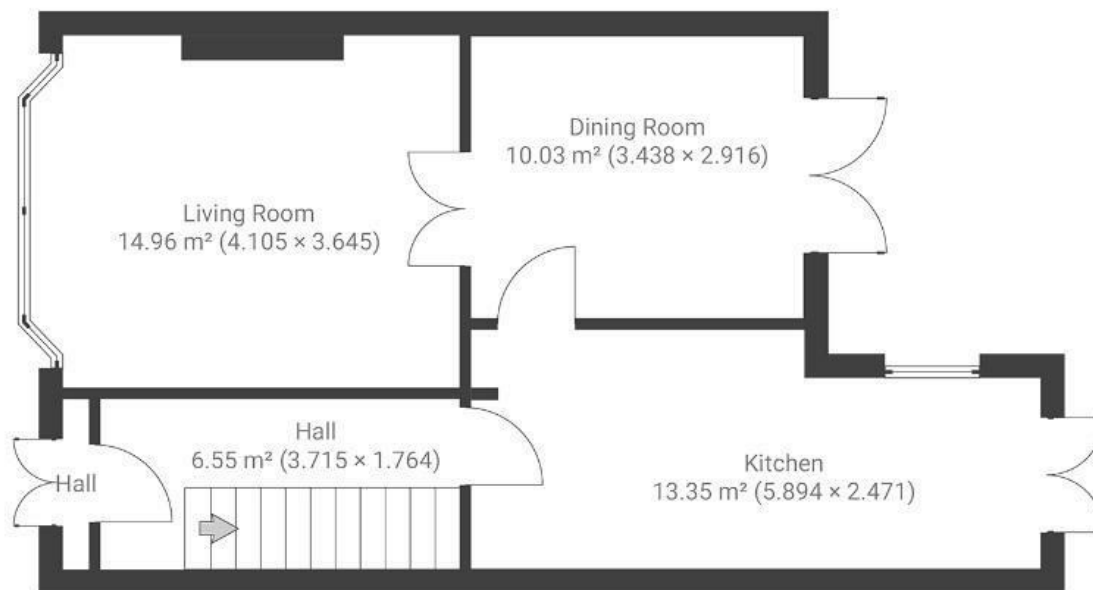
Crowther Park

HORFIELD

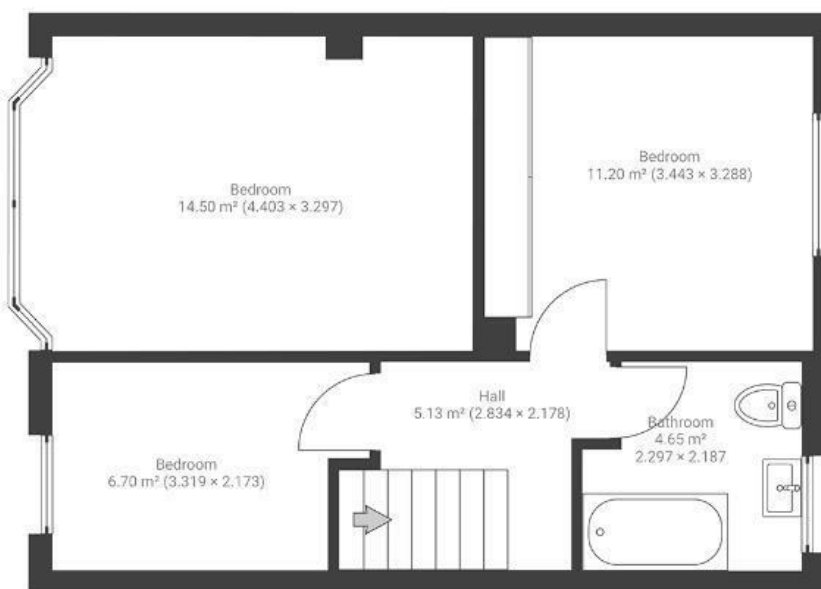
APPROXIMATE FLOOR AREA
99 SQM / 1065 SQFT



GROUND FLOOR



FIRST FLOOR



Boardwalk

Crowther Park

HORFIELD, BRISTOL



£425,000



3 Bedrooms



BS7 9NT



1 Bathrooms

"We will really miss being able to pop out for a quick walk around Stoke Park or heading over to St Werburghs City Farm for a day out. There is a great community feel on the street with a WhatsApp group where you can order fresh bread and pastries which can be collected from a neighbour."

